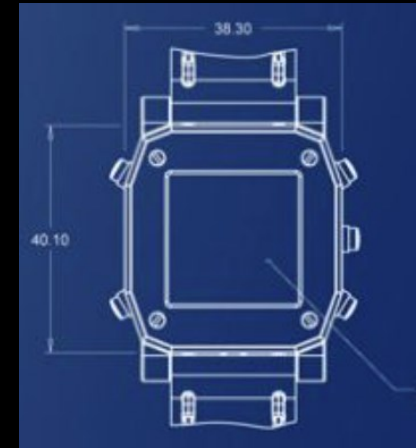
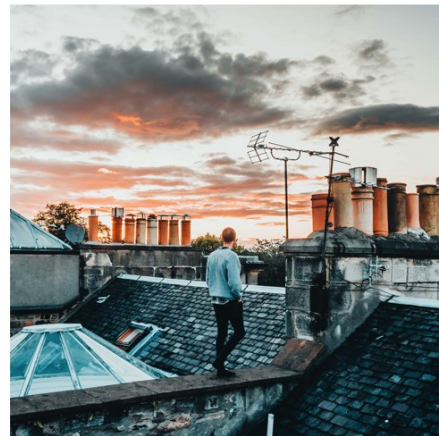
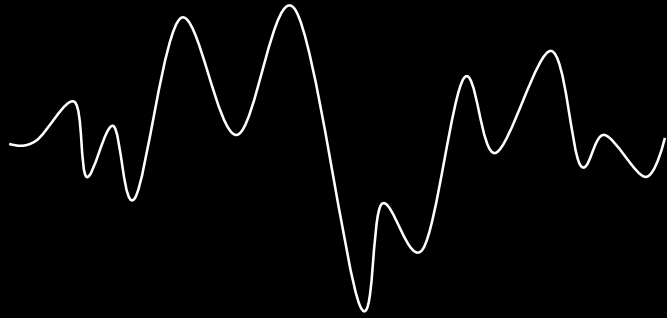


Internet of (Teaching) Things



Dr Jeremy Knox and Dr Michael Gallagher
Centre for Research in Digital Education
<http://www.de.ed.ac.uk/>

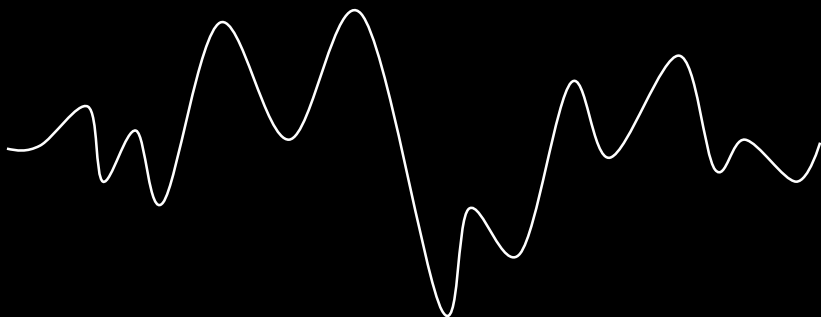


Michael Gallagher
Centre for Research in Digital Education
michael.s.gallagher@ed.ac.uk

[illegible]

IoT

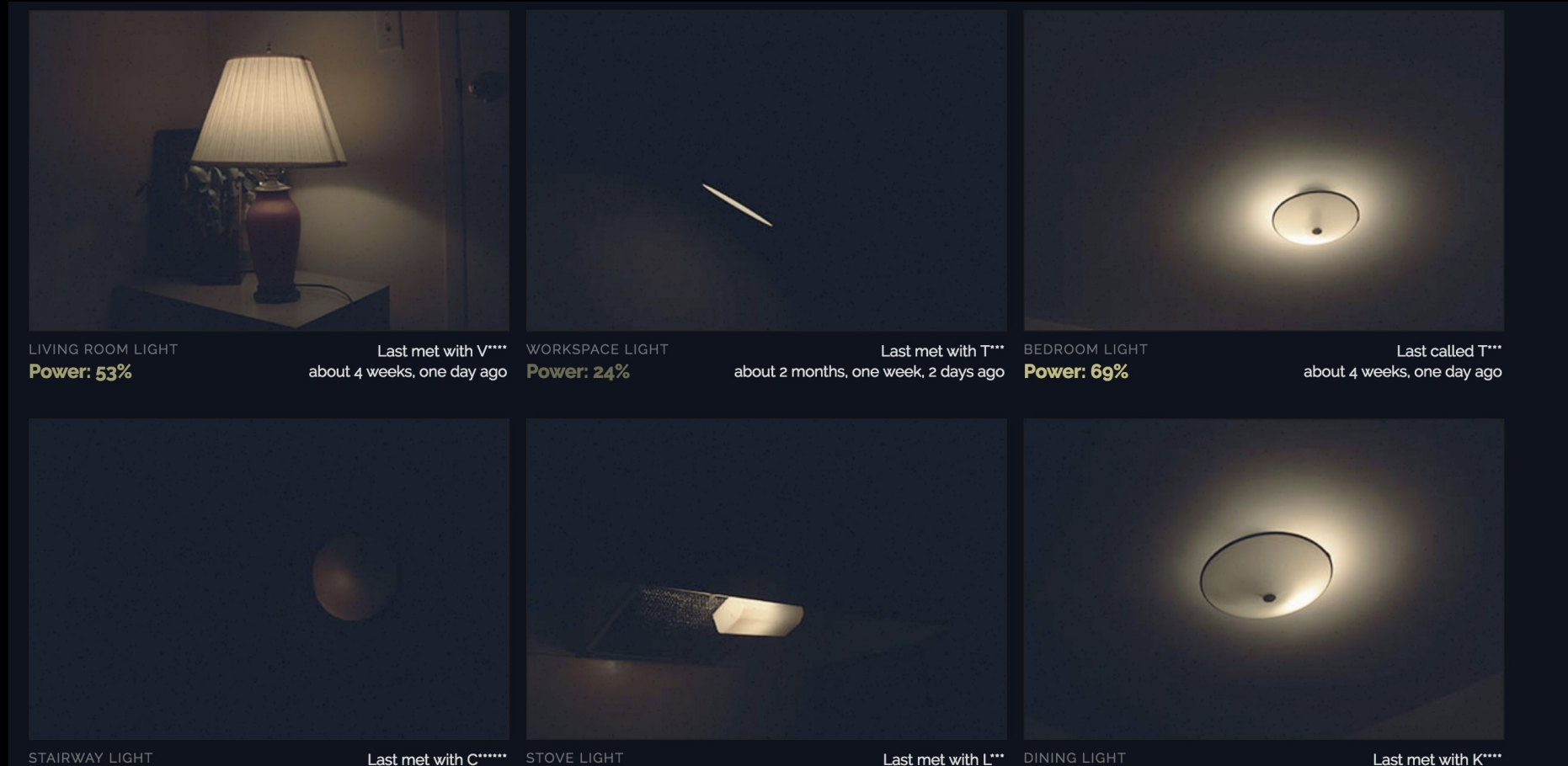
(sensor)

'thing'  data



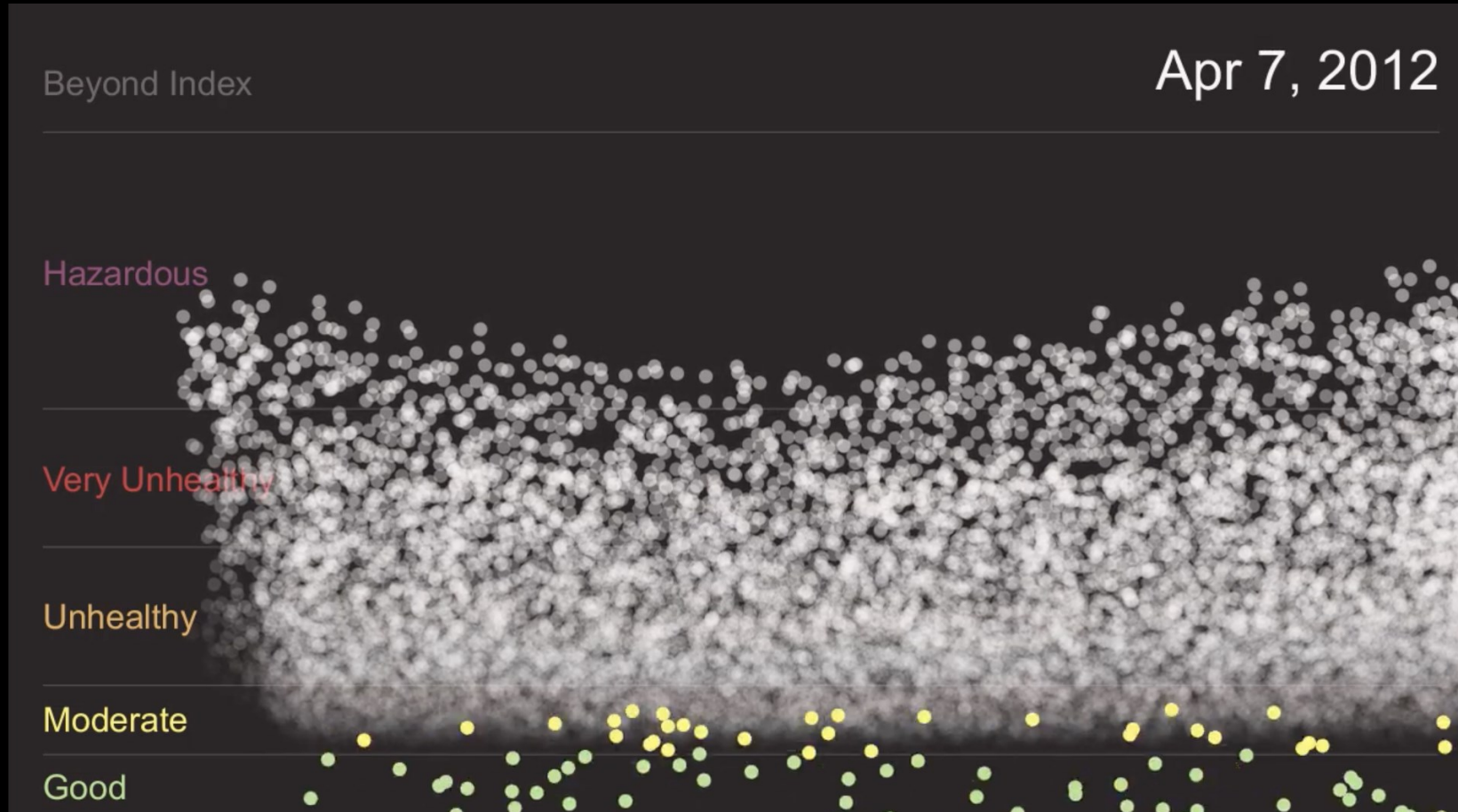
LIGHT REMINDERS

Each light represents a person in my life, and each light's power level is determined by how long it's been since I've seen that person. The more I see my friends, the brighter my home



[HTTP://LIGHT.FRIENDRND.COM/](http://light.friendrnd.com/)

Air Play: Smog Music



<https://vimeo.com/122603843>

Living Light

Designed by [Soo-in Yang](#) and [David Benjamin](#)

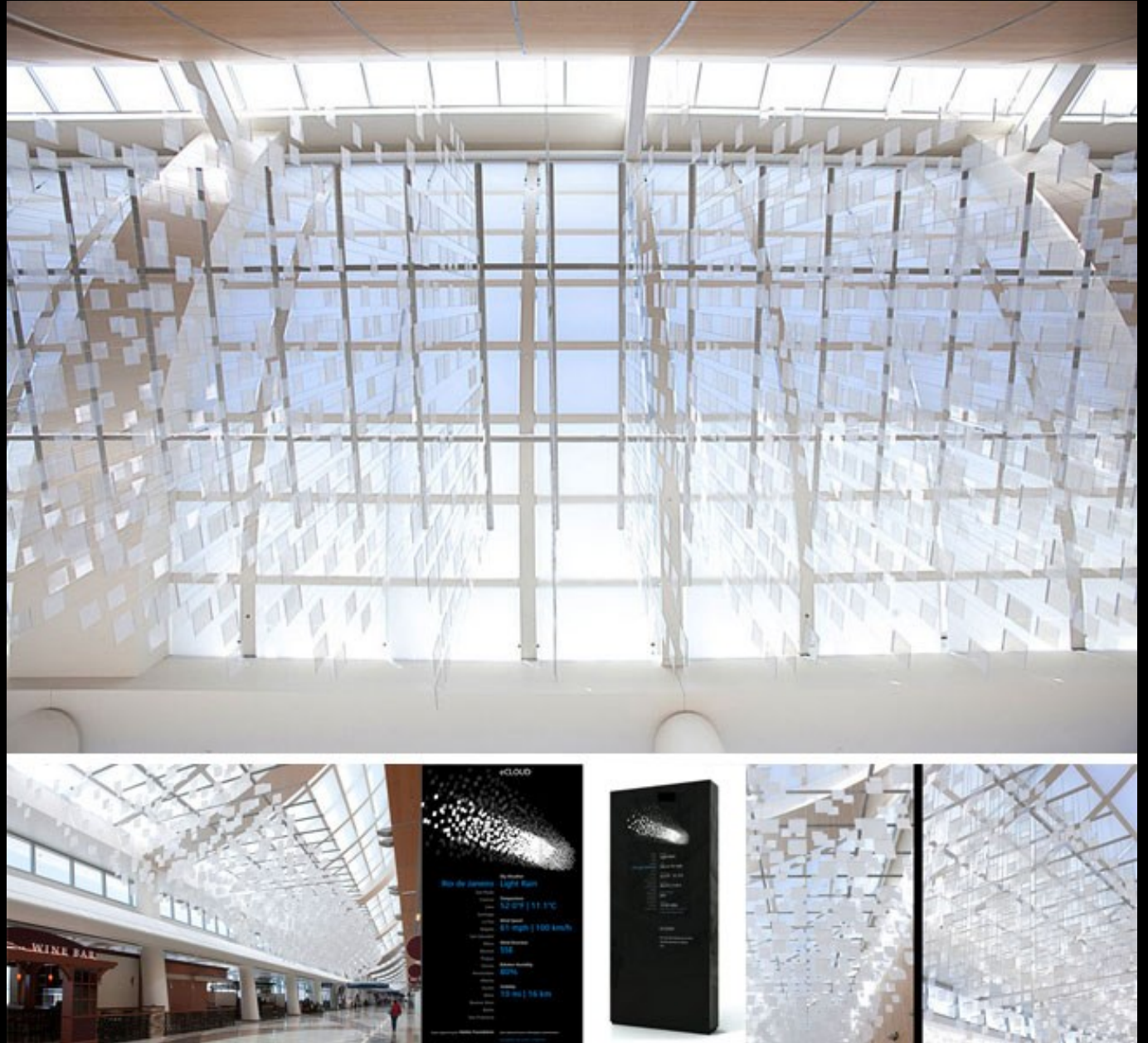


<http://www.livinglightseoul.net/index.htm>

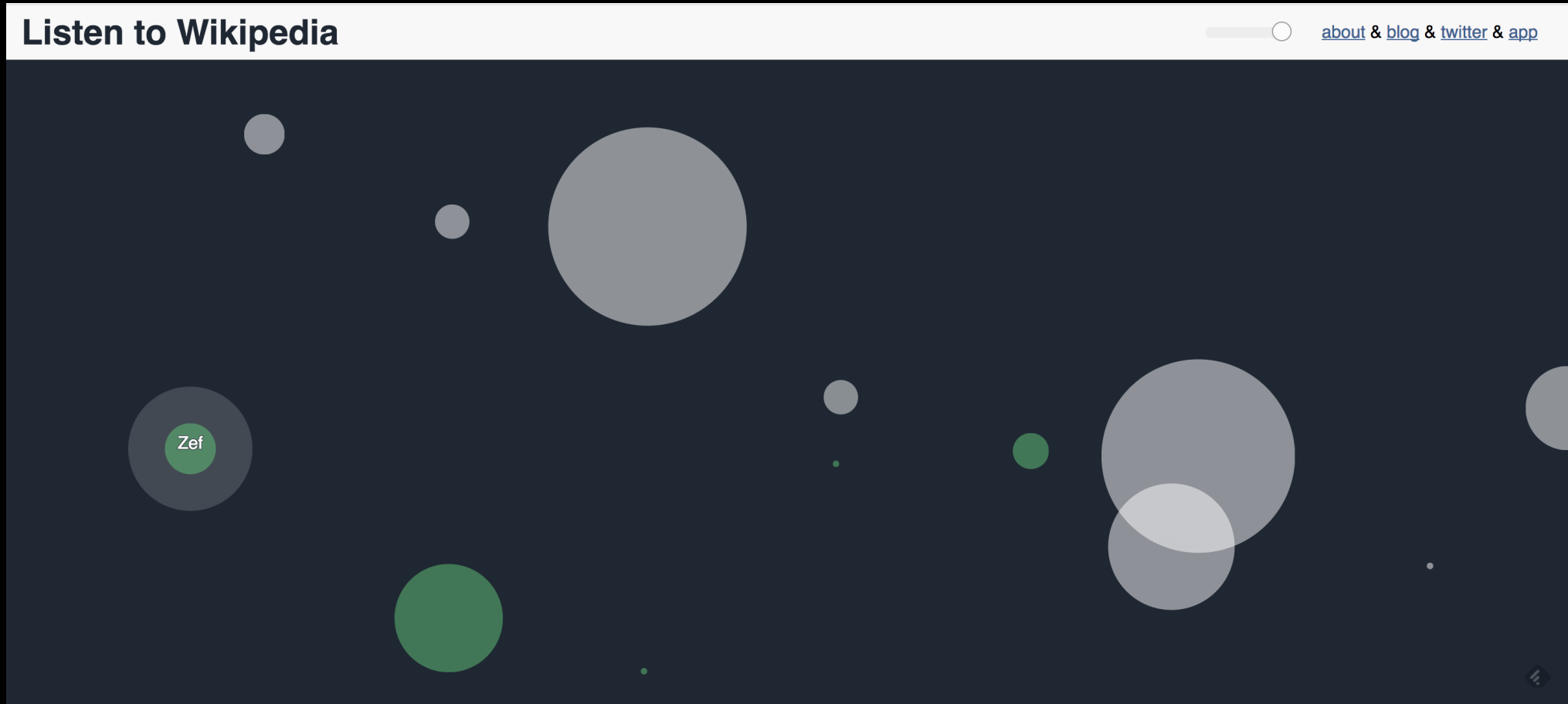
eCloud

art work by [Aaron Koblin](#), [Nik Hafermaas](#) and [Dan Goods](#).

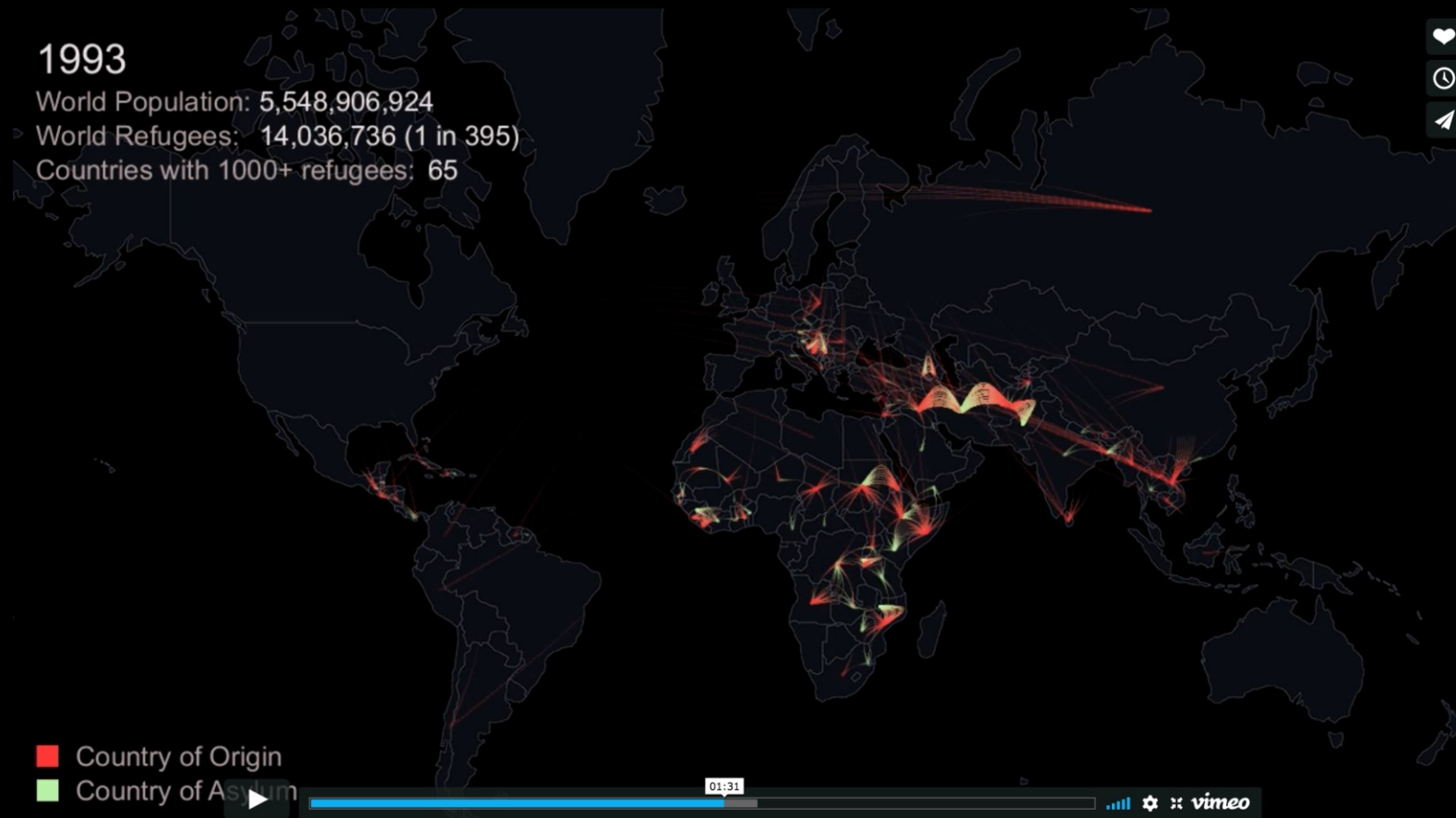
<https://vimeo.com/15108251>



Wikipedia Edits <http://listen.hatnote.com/>

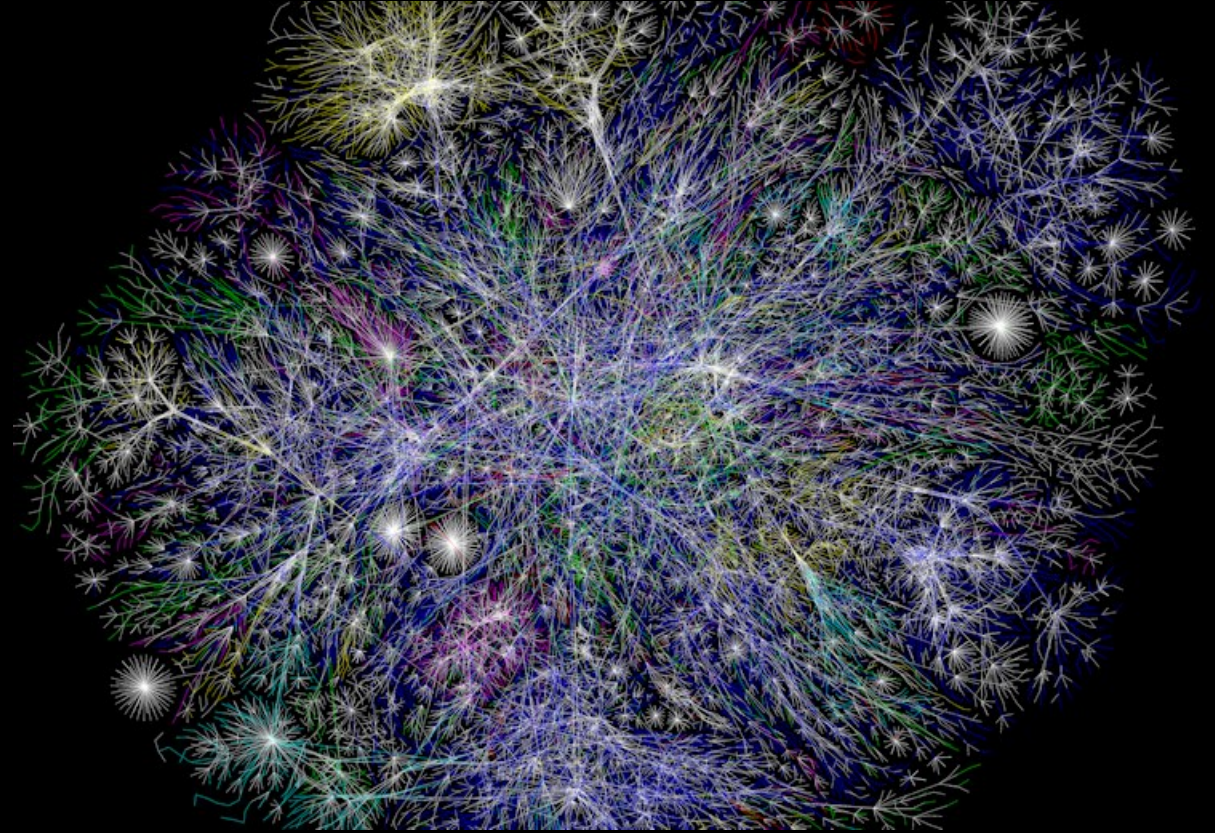


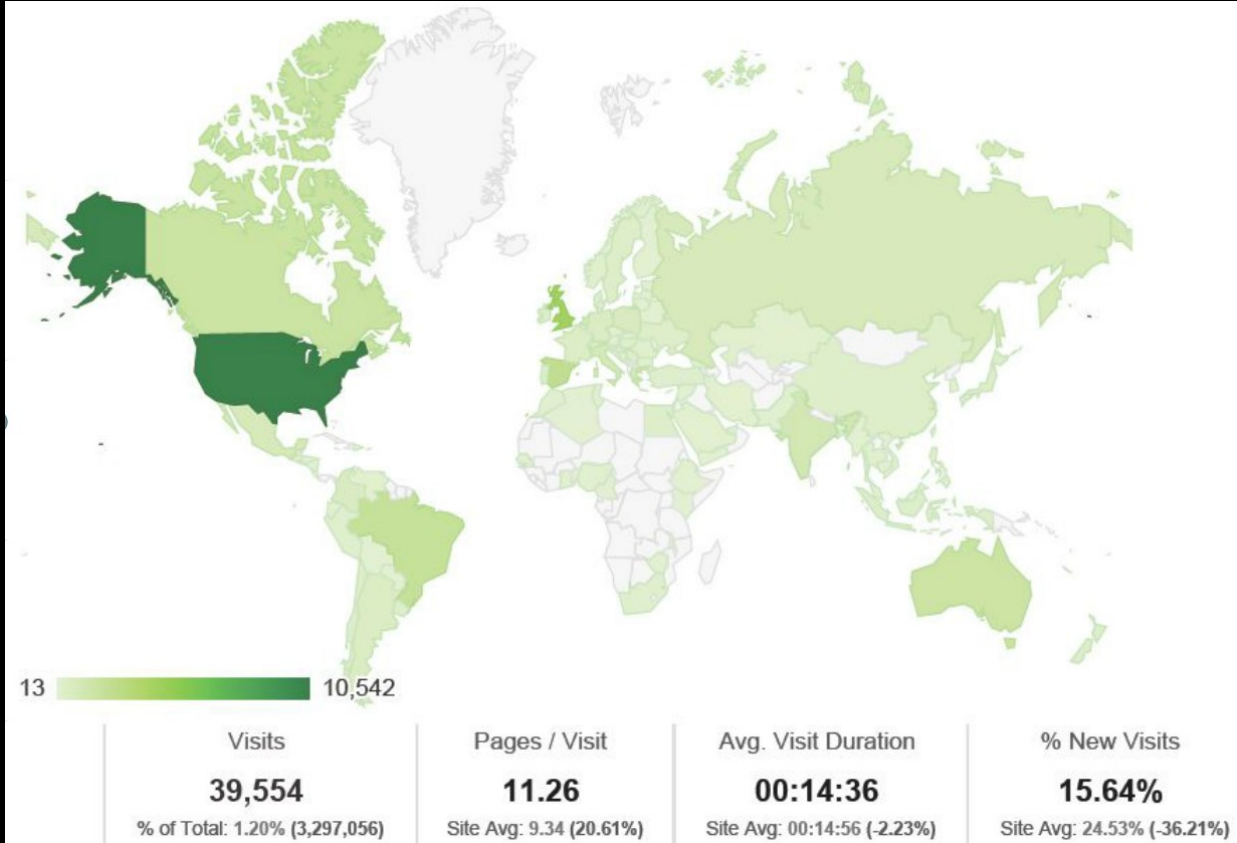
Distance from Home: Converting Refugees Movement into Sound



<https://datadrivendj.com/tracks/refugees>

University of Edinburgh @ scale

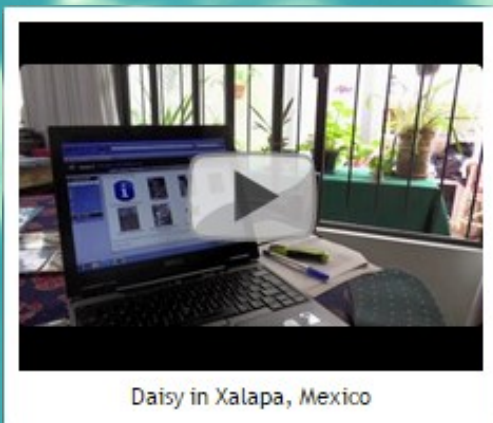




2,245,620
studying MOOCs



32,868 studying
at the University
of Edinburgh



The study spaces of participants on the MSc in Digital Education at The University of Edinburgh
by James Lamb and Michael Sean Gallagher Visit <http://edinspace.weebly.com>

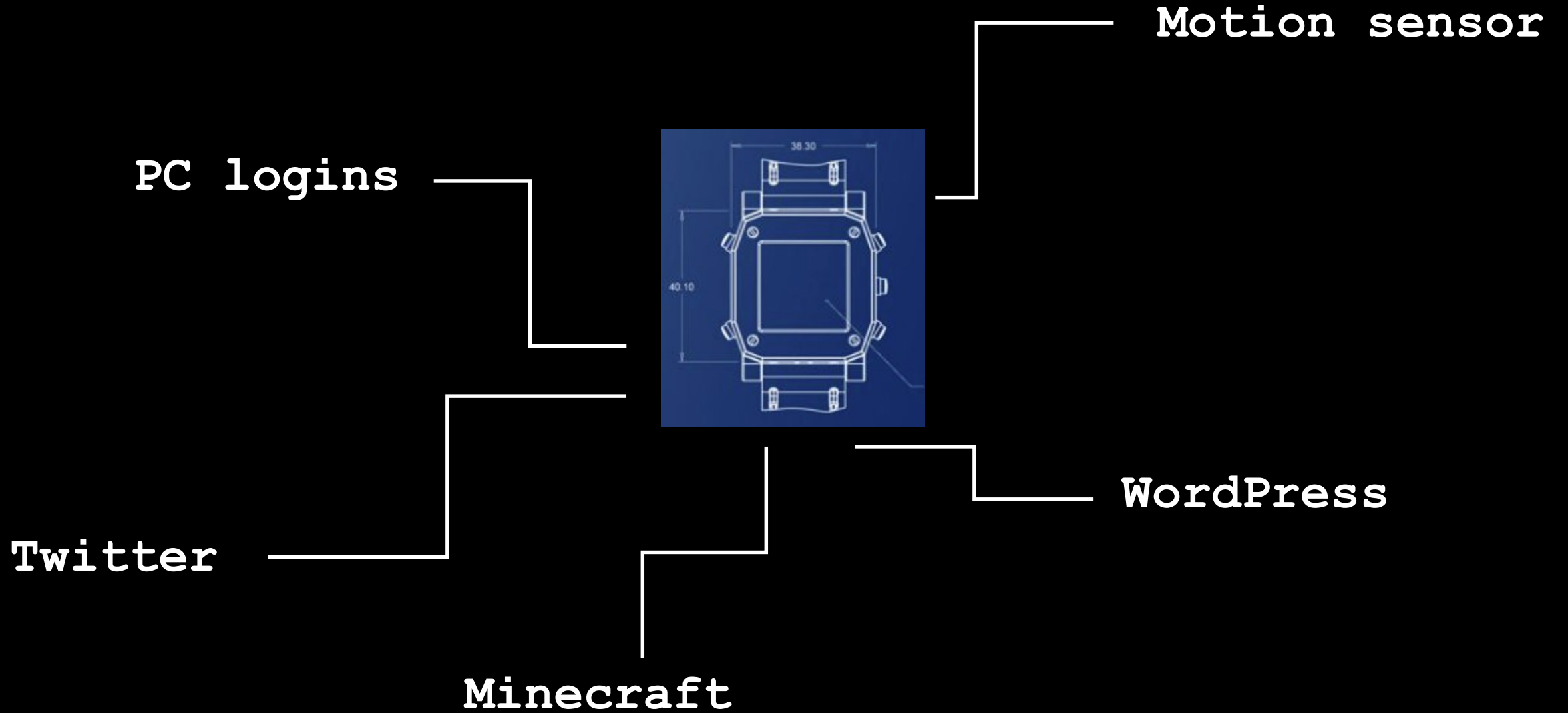
Source michaelseangallagher.org



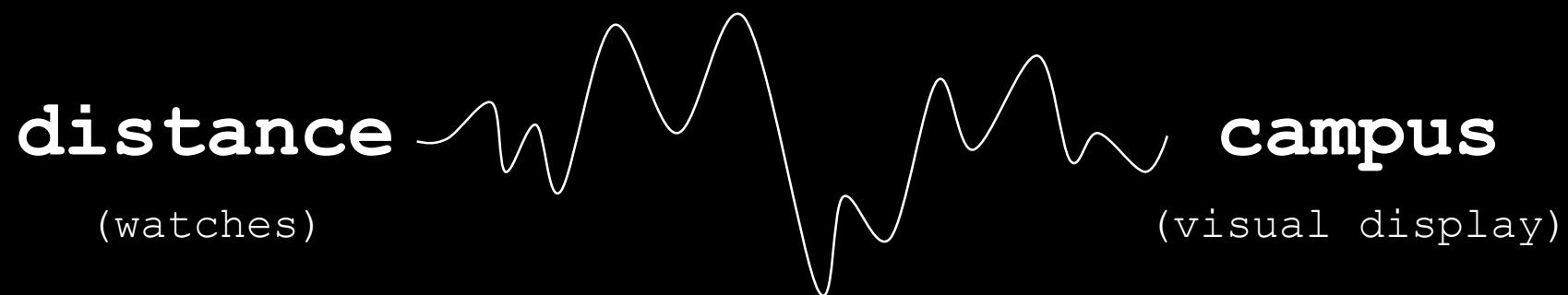
• P • U • L • S • E •

Wearable networked devices will be developed to foster 'ambient awareness' of the international student community: a peripheral appreciation of learning 'at' Edinburgh, yet not always present within the campus or the city.

Devices will develop research on the 'quantified self' and the notion of 'smart' educational institutions, as well as offering critical perspectives on surveillance and privacy relating to the increasing capture of student data.



Connecting distributed communities



IFTTT

🔍 Search

Services in appliances



GE APPLIANCES

DISHWASHER

GE Appliances Dishwasher



GE APPLIANCES

COOKING

GE Appliances Cooking



Wink: Egg Minder



GE APPLIANCES

GEOSPRING™

GE Appliances
GeoSpring™



HOOD

Home Connect Hood



WASHER

Home Connect Washer



GE APPLIANCES

REFRIGERATOR

GE Appliances Refrigerator



LG DRYER

LG Dryer



LG WASHER

LG Washer



OVEN

Home Connect Oven



DISHWASHER

Home Connect Dishwasher



DRYER

Home Connect Dryer

<https://ifttt.com>

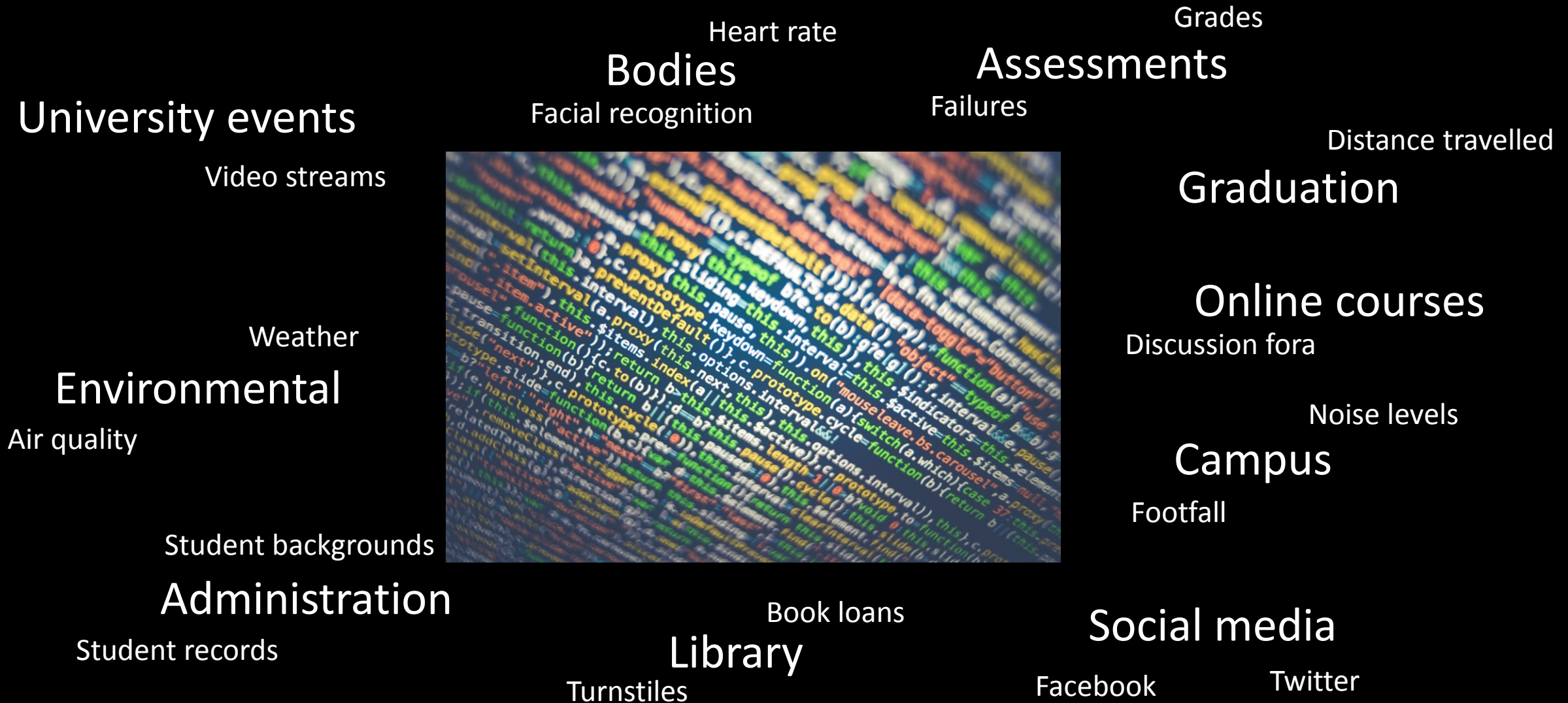
IoT can be about community and practice



This feeling is normal



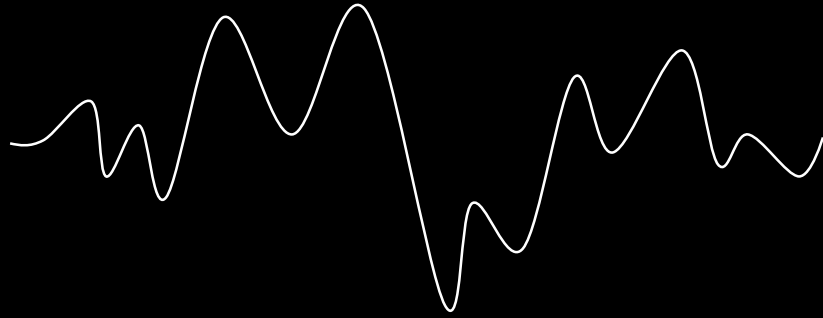
What kind of data could the University produce?



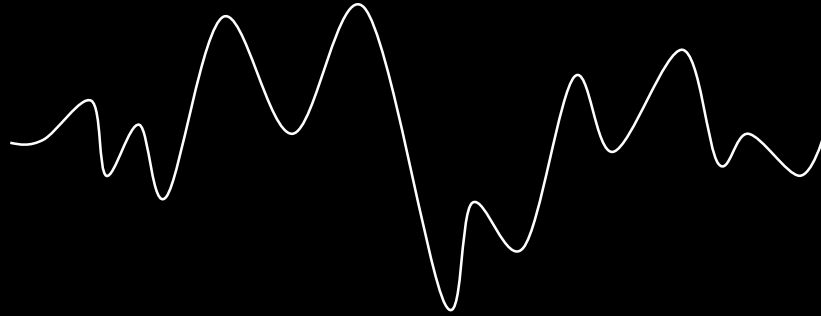
What kind of activity is possible with that data?



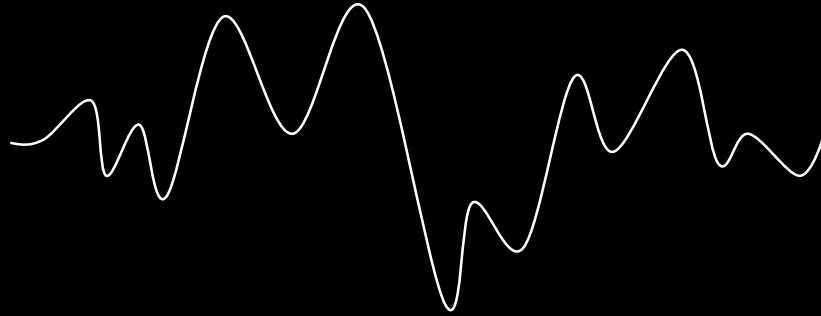
Who are we designing for?



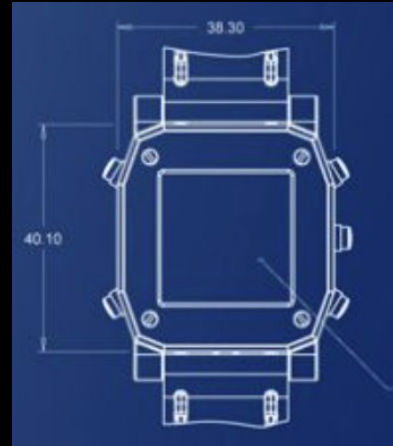
Discuss. Design. Connect.



Synthesize. Prepare. Present.



Internet of (Teaching) Things



Dr Jeremy Knox and Dr Michael Gallagher
Centre for Research in Digital Education
<http://www.de.ed.ac.uk/>