



# Foundations for All (FFA)

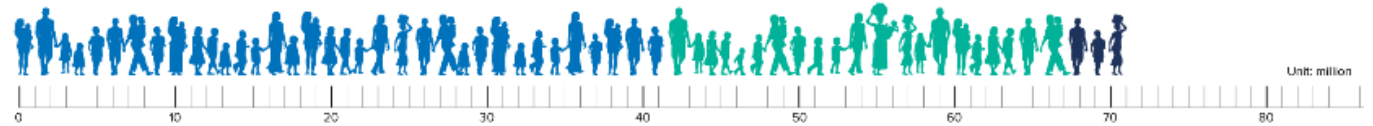
Partnerships and pathways into HE for refugees and displaced persons



# Refugee education (1)

- Refugee and displacement are increasingly permanent features of host countries
- Repatriation is small or non-existent
- Great strain on host countries
- Less than 3% globally enter HE
- Mixture of policy, capacity, languages, lack of psychosocial support, etc.

**70.8 million** forcibly displaced people worldwide



Internally Displaced People  
**41.3 million**

Refugees  
**25.9 million**  
20.4 million under UNHCR's mandate  
5.5 million Palestinian refugees under UNRWA's mandate

Asylum-seekers  
**3.5 million**

Where the world's displaced people are being hosted



About 80 per cent of refugees live in countries neighbouring their countries of origin

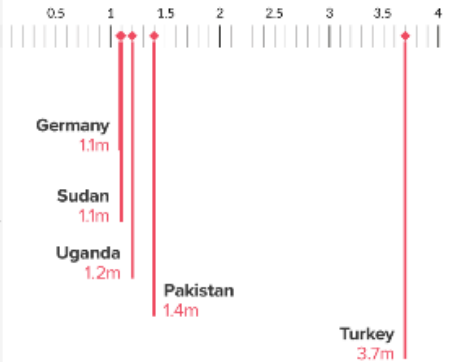
**57%** of UNHCR refugees came from three countries



**341,800** new asylum seekers

The greatest number of new asylum applications in 2018 was from Venezuelans

Top refugee-hosting countries



UNHCR has data on  
**3.9 million** stateless people  
but there are thought to be millions more

**92,400** refugees resettled

**37,000** people a day forced to flee their homes because of conflict and persecution

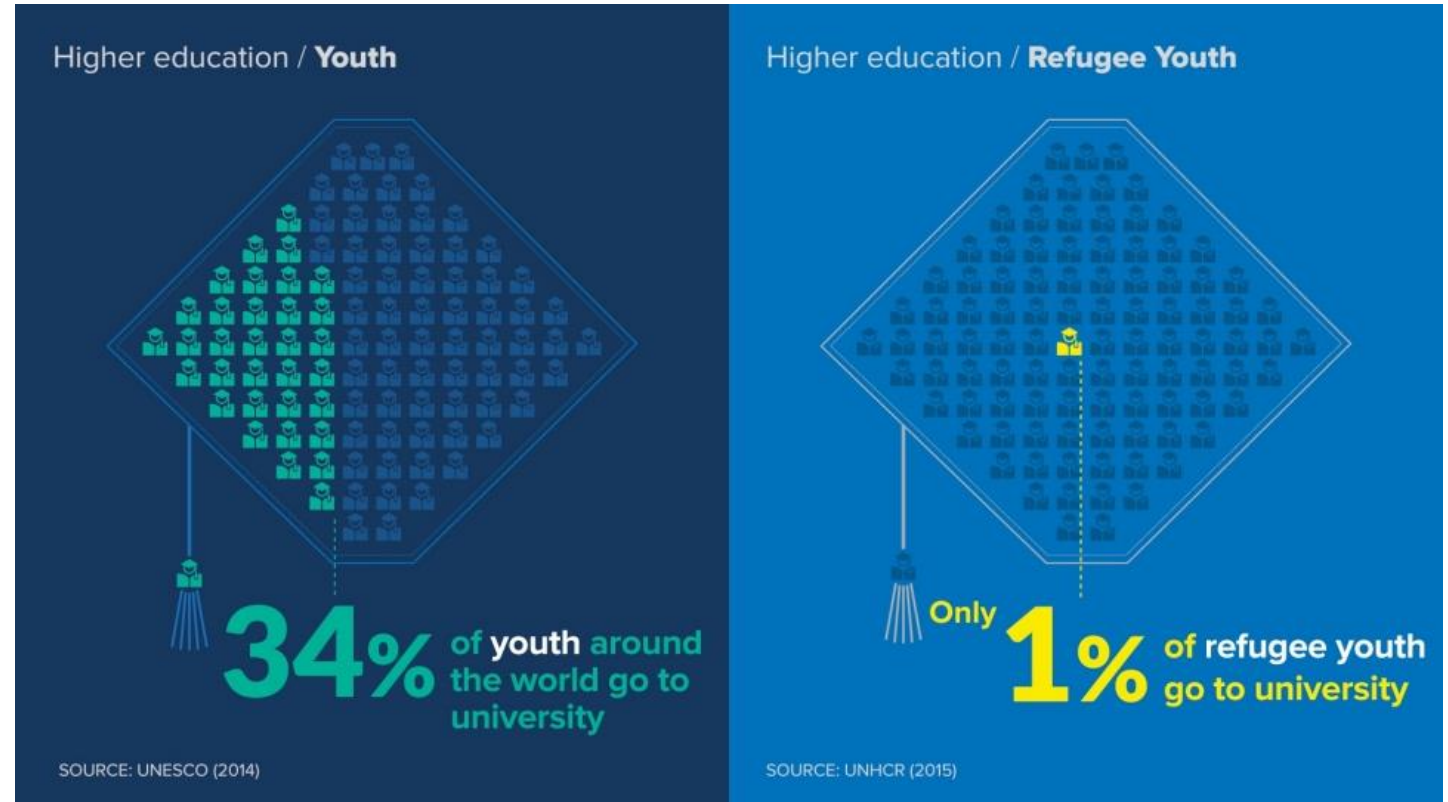
**16,803** personnel  
UNHCR employs 16,803 people worldwide (as of 31 May 2019)

**134** countries  
We work in 134 countries (as of 31 May 2019)


We are funded almost entirely by voluntary contributions, with 86 per cent from governments and the European Union and 10 per cent from private donors

## Refugee education (2): what works

- Scholarship programmes in the first country of asylum
- a blended learning approach in partnership with a network of accredited universities
- (TVET): education, training and skills development relating to a wide range of occupations
- Advocacy with ministries, universities and academia to expand access for refugee students and to mitigate barriers that prevent refugees from enrolling in university





The background of the slide is a photograph of a park. In the foreground, there is a large, light-colored circular graphic on the left side. The rest of the image shows a paved path in a park with several people walking. There are large trees with green foliage in the background and to the right. The overall scene is bright and natural.

# Foundations for All (FFA) - objectives

---

This project will provide insights on how to effectively facilitate access to and future success in higher education for displaced and refugee young people in resource-poor environments through contextualised bridging programmes.



# Foundations for All (FFA): partner-driven



## funder

preparing new round of Africa scholarships (new priority = refugees and online)

MCF programme +  
+ SPS, MHE  
+ COL, ISG  
+ Maths, Vet School

MCF programme +



MCF programme +



# University of Edinburgh


---



THE UNIVERSITY  
*of* EDINBURGH

- School of Social and Political Science
- Centre for Research in Digital Education
- Centre for Open Learning
- School of Mathematics
- The Royal (Dick) School of Veterinary Studies
- Learning, Teaching and the Web, Information Services Group



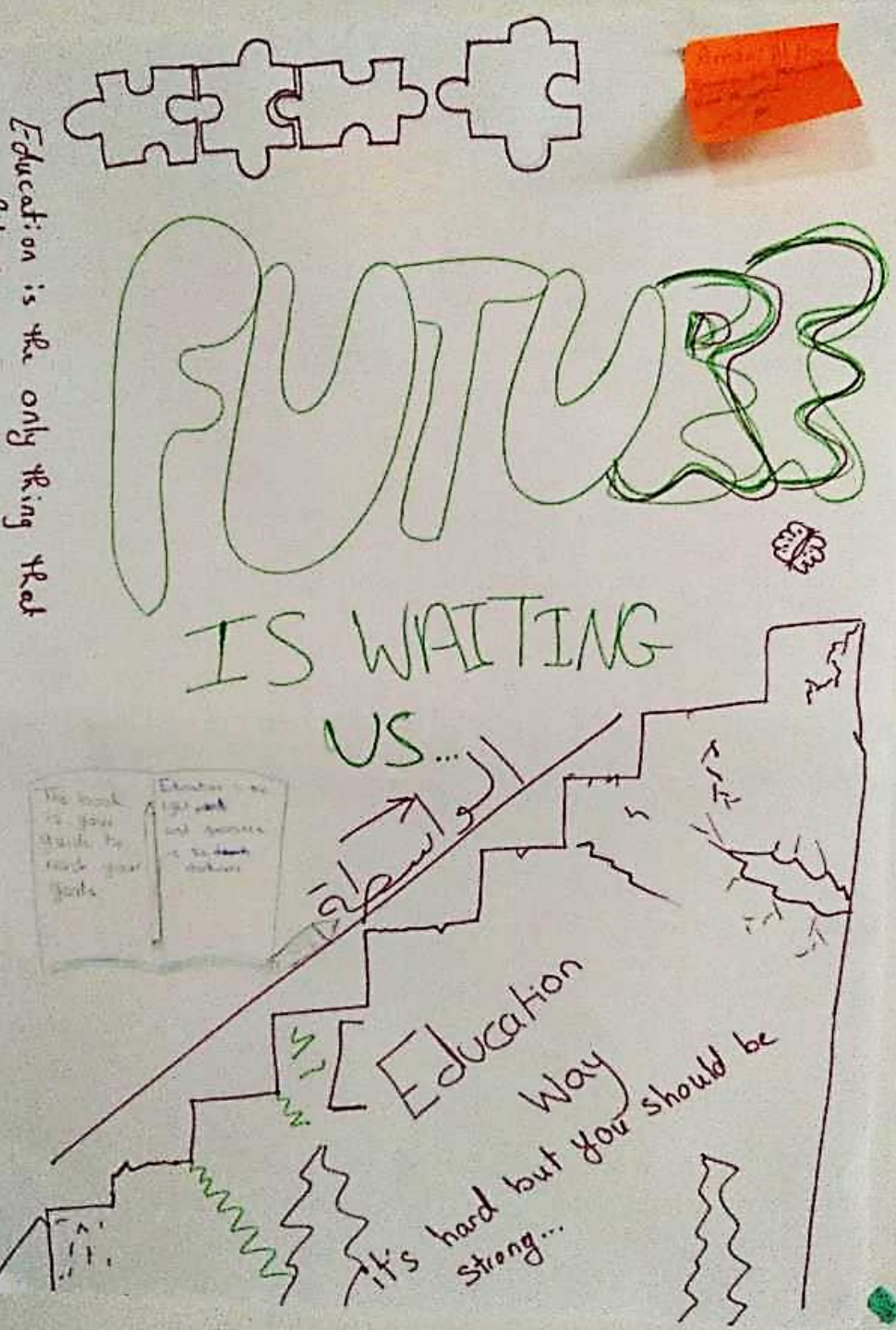


## PHASE 1: Learning from current experiences

---

Collaborative field research  
with PADILEA in Lebanon





# August 2019 fieldwork with MCF scholars

---

## 1A: Beirut

- Research trip to Lebanon with Mastercard Foundation Scholars from Uganda, Lebanon, and Edinburgh
  - training on fieldwork and field methodologies
  - Scoping Tool and Design Framework

## 1B: Beqaa Valley

- Fieldwork in settlement running PADILEA programme
- Interviews, Focus Groups, Participatory mapping (barriers and journeys)



## PHASE 2: Developing a Scoping Tool

- Finalising the Lebanon/PADILEA analysis, testing the analysis elsewhere
- Three institutions, and MCF scholars, analysing the data
  - Scoping Tool and Design Framework
  - Blended learning design



## PHASE 3A: designing a new programme

- In partnership with Makerere University:
  - 60 credit blended learning programme
  - Workshop in Kampala in February
  - ELDeR design sessions in April
  - Student voices: co-designers and critical friends
- Tutor training programme
- Exploring possible pathways to qualifications







## PHASE 3B: piloting a new programme

- 60 credit blended learning programme
- English for Academic Purposes (EAP)
- Mathematics
- Digital skills
- Study skills
- Critical Thinking using Literature and Philosophy
- Social Sciences through the Study of Migration and Displacement





# Foundations for All (FFA)

Partnerships and pathways into HE for refugees and displaced persons